

Daily Clearing Analysis: Region

Analysis at 00:05 on Tuesday 25 August 2015 (12 days after A level results day)

R.1 Placed applicants by region of domicile: 12 days after A level results day

Placed applicants: change relative to 2014 cycle totals

- North East
- North West
- Yorkshire and The Humber
- East Midlands
- West Midlands
- East of England
- London
- South East
- South West



R.2 Placed applicants by region of domicile: 12 days after A level results day

| Applicant Status | Domicile | 2011 | 2012 | 2013 | 2014 | 2015 |
|------------------|--------------------------|---------|---------|---------|---------|---------|
| Placed | North East | 15,410 | 13,930 | 15,270 | 15,050 | 15,770 |
| | North West | 48,240 | 43,840 | 45,990 | 47,540 | 47,990 |
| | Yorkshire and The Humber | 31,690 | 29,430 | 31,520 | 32,530 | 33,270 |
| | East Midlands | 26,800 | 24,650 | 26,480 | 27,580 | 27,400 |
| | West Midlands | 35,640 | 33,570 | 36,250 | 37,510 | 38,650 |
| | East of England | 36,060 | 32,950 | 35,340 | 36,290 | 37,380 |
| | London | 62,270 | 57,590 | 61,730 | 64,830 | 68,990 |
| | South East | 56,450 | 51,540 | 54,520 | 56,500 | 58,370 |
| | South West | 32,320 | 28,730 | 31,390 | 32,320 | 33,330 |
| | (England total) | 344,860 | 316,220 | 338,490 | 350,140 | 361,150 |
| | Scotland | 27,890 | 27,940 | 28,460 | 29,110 | 31,960 |
| | Northern Ireland | 13,510 | 12,660 | 14,000 | 14,040 | 13,730 |
| | Wales | 17,020 | 17,620 | 17,800 | 18,570 | 19,010 |
| | UK | 403,280 | 374,430 | 398,750 | 411,860 | 425,850 |

R.3 Placed applicants by region of domicile: 12 days after A level results day

Placed applicants: change relative to 2014 cycle totals

| Applicant Status | Domicile | 2011 | 2012 | 2013 | 2014 | 2015 |
|------------------|--------------------------|------|------|------|------|------|
| Placed | North East | 2% | -7% | 1% | 0% | 5% |
| | North West | 1% | -8% | -3% | 0% | 1% |
| | Yorkshire and The Humber | -3% | -10% | -3% | 0% | 2% |
| | East Midlands | -3% | -11% | -4% | 0% | -1% |
| | West Midlands | -5% | -11% | -3% | 0% | 3% |
| | East of England | -1% | -9% | -3% | 0% | 3% |
| | London | -4% | -11% | -5% | 0% | 6% |
| | South East | -0% | -9% | -3% | 0% | 3% |
| | South West | -0% | -11% | -3% | 0% | 3% |
| | (England total) | -2% | -10% | -3% | 0% | 3% |
| | Scotland | -4% | -4% | -2% | 0% | 10% |
| | Northern Ireland | -4% | -10% | -0% | 0% | -2% |
| | Wales | -8% | -5% | -4% | 0% | 2% |
| | UK | -2% | -9% | -3% | 0% | 3% |

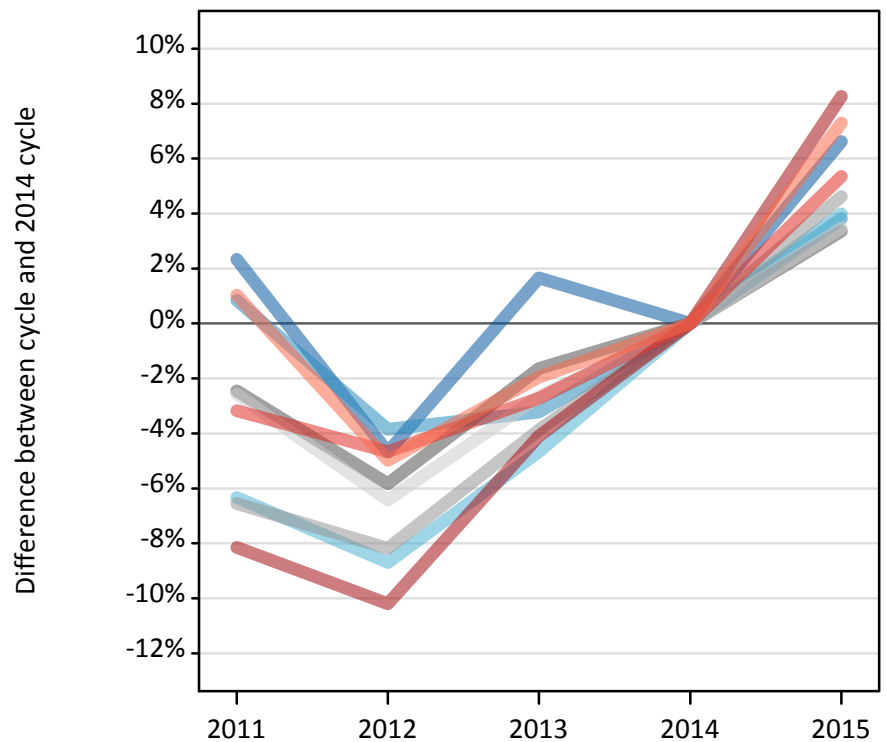
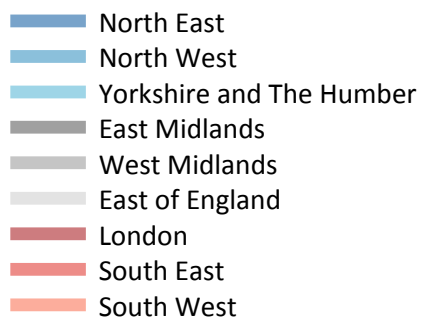
R.4 Placed applicants by region of domicile: 12 days after A level results day

Placed applicants: absolute change relative to 2014 cycle totals

| Applicant Status | Domicile | 2011 | 2012 | 2013 | 2014 | 2015 |
|------------------|--------------------------|--------|---------|---------|------|--------|
| Placed | North East | 360 | -1,120 | 220 | 0 | 720 |
| | North West | 700 | -3,700 | -1,540 | 0 | 450 |
| | Yorkshire and The Humber | -840 | -3,100 | -1,010 | 0 | 750 |
| | East Midlands | -780 | -2,930 | -1,100 | 0 | -180 |
| | West Midlands | -1,870 | -3,940 | -1,260 | 0 | 1,140 |
| | East of England | -240 | -3,350 | -960 | 0 | 1,080 |
| | London | -2,560 | -7,230 | -3,100 | 0 | 4,170 |
| | South East | -60 | -4,960 | -1,980 | 0 | 1,870 |
| | South West | -10 | -3,600 | -930 | 0 | 1,010 |
| | (England total) | -5,290 | -33,930 | -11,660 | 0 | 11,000 |
| | Scotland | -1,220 | -1,170 | -650 | 0 | 2,850 |
| | Northern Ireland | -530 | -1,390 | -40 | 0 | -310 |
| | Wales | -1,550 | -950 | -770 | 0 | 450 |
| | UK | -8,580 | -37,430 | -13,110 | 0 | 13,990 |

R.5 Placed 18 year old applicants by region of domicile: 12 days after A level results day

Placed 18 year old applicants: change relative to 2014 cycle totals



R.6 Placed 18 year old applicants by region of domicile: 12 days after A level results day

| Applicant Status | Domicile | 2011 | 2012 | 2013 | 2014 | 2015 |
|------------------|--------------------------|---------|---------|---------|---------|---------|
| Placed | North East | 8,100 | 7,550 | 8,050 | 7,920 | 8,440 |
| | North West | 26,370 | 25,140 | 25,310 | 26,150 | 27,150 |
| | Yorkshire and The Humber | 16,910 | 16,480 | 17,210 | 18,050 | 18,770 |
| | East Midlands | 14,680 | 14,170 | 14,800 | 15,050 | 15,550 |
| | West Midlands | 18,900 | 18,570 | 19,440 | 20,220 | 21,160 |
| | East of England | 20,870 | 20,040 | 20,850 | 21,420 | 22,160 |
| | London | 29,860 | 29,200 | 31,180 | 32,510 | 35,200 |
| | South East | 31,060 | 30,590 | 31,210 | 32,080 | 33,800 |
| | South West | 16,400 | 15,420 | 15,910 | 16,230 | 17,420 |
| | (England total) | 183,150 | 177,150 | 183,950 | 189,630 | 199,640 |
| | Scotland | 13,960 | 14,060 | 14,140 | 14,310 | 14,400 |
| | Northern Ireland | 8,570 | 8,180 | 8,670 | 8,480 | 8,380 |
| | Wales | 9,380 | 9,670 | 9,600 | 9,990 | 10,460 |
| | UK | 215,060 | 209,070 | 216,370 | 222,410 | 232,870 |

R.7 Placed 18 year old applicants by region of domicile: 12 days after A level results day

Placed 18 year old applicants: change relative to 2014 cycle totals

| Applicant Status | Domicile | 2011 | 2012 | 2013 | 2014 | 2015 |
|------------------|--------------------------|------|------|------|------|------|
| Placed | North East | 2% | -5% | 2% | 0% | 7% |
| | North West | 1% | -4% | -3% | 0% | 4% |
| | Yorkshire and The Humber | -6% | -9% | -5% | 0% | 4% |
| | East Midlands | -2% | -6% | -2% | 0% | 3% |
| | West Midlands | -7% | -8% | -4% | 0% | 5% |
| | East of England | -3% | -6% | -3% | 0% | 3% |
| | London | -8% | -10% | -4% | 0% | 8% |
| | South East | -3% | -5% | -3% | 0% | 5% |
| | South West | 1% | -5% | -2% | 0% | 7% |
| | (England total) | -3% | -7% | -3% | 0% | 5% |
| | Scotland | -2% | -2% | -1% | 0% | 1% |
| | Northern Ireland | 1% | -4% | 2% | 0% | -1% |
| | Wales | -6% | -3% | -4% | 0% | 5% |
| | UK | -3% | -6% | -3% | 0% | 5% |

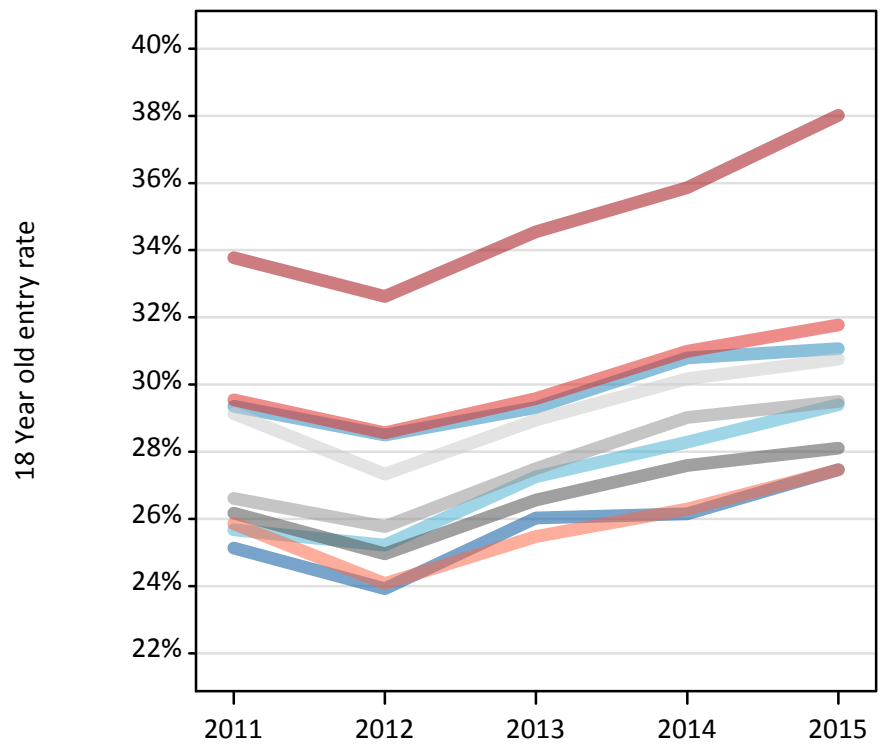
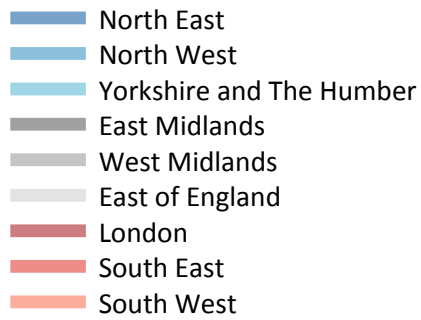
R.8 Placed 18 year old applicants by region of domicile: 12 days after A level results day

Placed 18 year old applicants: absolute change relative to 2014 cycle totals

| Applicant Status | Domicile | 2011 | 2012 | 2013 | 2014 | 2015 |
|------------------|--------------------------|--------|---------|--------|------|--------|
| Placed | North East | 190 | -370 | 130 | 0 | 520 |
| | North West | 220 | -1,010 | -840 | 0 | 1,000 |
| | Yorkshire and The Humber | -1,140 | -1,570 | -840 | 0 | 720 |
| | East Midlands | -370 | -880 | -250 | 0 | 510 |
| | West Midlands | -1,330 | -1,660 | -780 | 0 | 930 |
| | East of England | -550 | -1,380 | -570 | 0 | 750 |
| | London | -2,650 | -3,320 | -1,330 | 0 | 2,690 |
| | South East | -1,020 | -1,500 | -870 | 0 | 1,720 |
| | South West | 170 | -810 | -320 | 0 | 1,190 |
| | (England total) | -6,480 | -12,480 | -5,670 | 0 | 10,010 |
| | Scotland | -350 | -240 | -170 | 0 | 90 |
| | Northern Ireland | 90 | -300 | 190 | 0 | -100 |
| | Wales | -610 | -320 | -390 | 0 | 470 |
| | UK | -7,340 | -13,340 | -6,040 | 0 | 10,460 |

R.9 Placed 18 year old applicants by region of domicile: 12 days after A level results day

Placed 18 year old applicants: entry rate



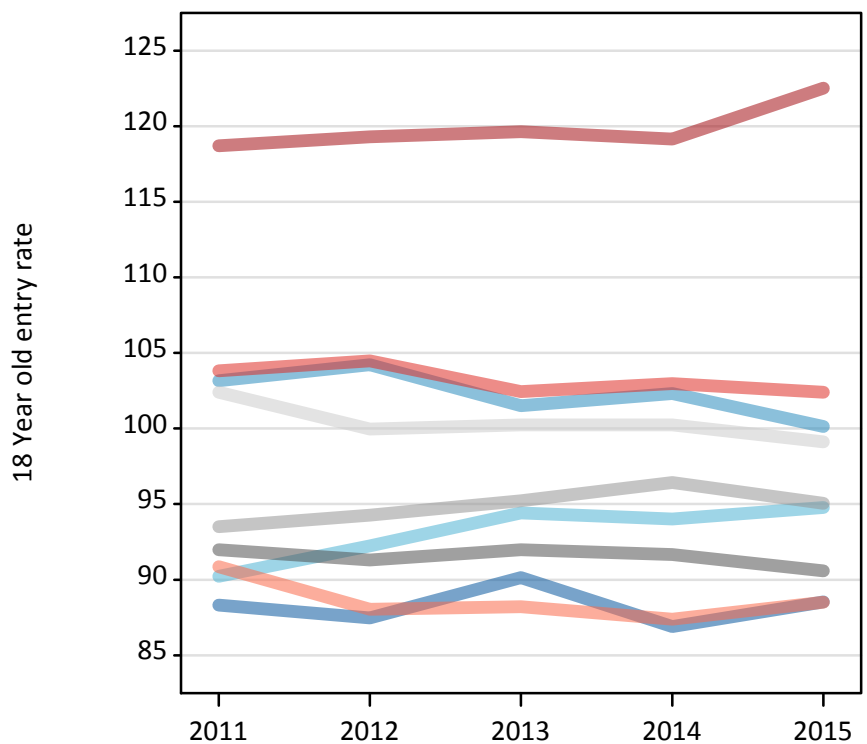
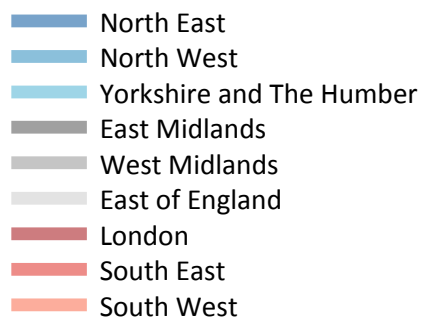
R.10 Placed 18 year old applicants by region of domicile: 12 days after A level results day

Placed 18 year old applicants: entry rate

| Applicant Status | Domicile | 2011 | 2012 | 2013 | 2014 | 2015 |
|------------------|--------------------------|-------|-------|-------|-------|-------|
| Placed | North East | 25.1% | 23.9% | 26.0% | 26.2% | 27.5% |
| | North West | 29.4% | 28.5% | 29.3% | 30.8% | 31.1% |
| | Yorkshire and The Humber | 25.7% | 25.2% | 27.3% | 28.3% | 29.4% |
| | East Midlands | 26.2% | 25.0% | 26.6% | 27.6% | 28.1% |
| | West Midlands | 26.6% | 25.8% | 27.5% | 29.0% | 29.5% |
| | East of England | 29.1% | 27.3% | 28.9% | 30.2% | 30.8% |
| | London | 33.8% | 32.6% | 34.5% | 35.9% | 38.0% |
| | South East | 29.5% | 28.6% | 29.6% | 31.0% | 31.8% |
| | South West | 25.9% | 24.1% | 25.5% | 26.3% | 27.5% |
| | (England total) | 28.5% | 27.3% | 28.9% | 30.1% | 31.0% |
| | Scotland | 22.2% | 22.7% | 23.0% | 23.3% | 23.9% |
| | Northern Ireland | 34.3% | 32.5% | 35.4% | 34.9% | 33.7% |
| | Wales | 24.3% | 25.1% | 25.4% | 26.6% | 27.8% |
| | UK | 27.9% | 27.0% | 28.4% | 29.5% | 30.4% |

R.11 Placed 18 year old applicants by region of domicile: 12 days after A level results day

Placed 18 year old applicants: entry rates (indexed to 100 = England)



R.12 Placed 18 year old applicants by region of domicile: 12 days after A level results day

Placed 18 year old applicants: entry rate (indexed to 100 = England)

| Applicant Status | Domicile | 2011 | 2012 | 2013 | 2014 | 2015 |
|------------------|--------------------------|------|------|------|------|------|
| Placed | North East | 88 | 87 | 90 | 87 | 89 |
| | North West | 103 | 104 | 102 | 102 | 100 |
| | Yorkshire and The Humber | 90 | 92 | 94 | 94 | 95 |
| | East Midlands | 92 | 91 | 92 | 92 | 91 |
| | West Midlands | 94 | 94 | 95 | 96 | 95 |
| | East of England | 102 | 100 | 100 | 100 | 99 |
| | London | 119 | 119 | 120 | 119 | 123 |
| | South East | 104 | 104 | 102 | 103 | 102 |
| | South West | 91 | 88 | 88 | 87 | 89 |
| | (England total) | 100 | 100 | 100 | 100 | 100 |