

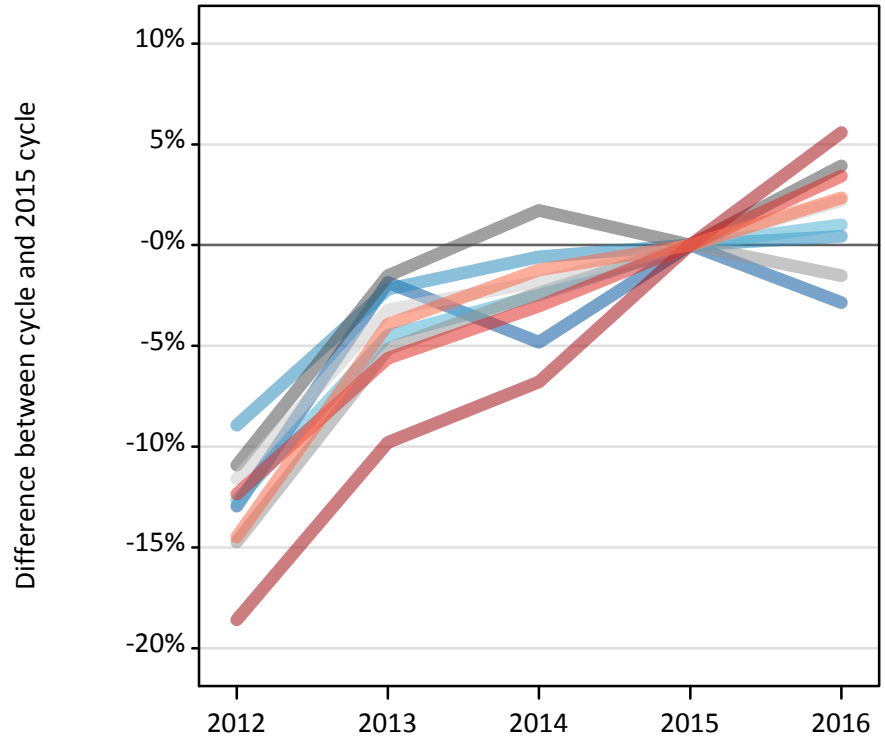
Daily Clearing Analysis: Region

Analysis at 00:05 on Thursday 18 August 2016 (A level results day)

R.1 Placed applicants by region of domicile: A level results day

Placed applicants: change relative to 2015 cycle totals

- North East
- North West
- Yorkshire and The Humber
- East Midlands
- West Midlands
- East of England
- London
- South East
- South West



R.2 Placed applicants by region of domicile: A level results day

Applicant Status	Domicile	2012	2013	2014	2015	2016
Placed	North East	11,700	13,190	12,790	13,440	13,060
	North West	36,540	39,250	39,890	40,130	40,310
	Yorkshire and The Humber	24,730	27,050	27,630	28,320	28,610
	East Midlands	20,690	22,880	23,630	23,230	24,150
	West Midlands	27,700	30,810	31,720	32,480	31,990
	East of England	27,960	30,600	31,040	31,620	32,320
	London	43,230	47,910	49,510	53,110	56,070
	South East	43,570	46,920	48,210	49,710	51,410
	South West	24,450	27,470	28,240	28,590	29,260
	(England total)	260,570	286,070	292,650	300,630	307,170
	Scotland	26,220	26,910	27,910	30,570	31,930
	Northern Ireland	9,690	11,280	11,110	11,260	12,000
	Wales	14,910	15,240	15,980	16,220	16,630
	UK	311,390	339,500	347,650	358,680	367,730

R.3 Placed applicants by region of domicile: A level results day

Placed applicants: change relative to 2015 cycle totals

Applicant Status	Domicile	2012	2013	2014	2015	2016
Placed	North East	-13%	-2%	-5%	0%	-3%
	North West	-9%	-2%	-1%	0%	0%
	Yorkshire and The Humber	-13%	-4%	-2%	0%	1%
	East Midlands	-11%	-2%	2%	0%	4%
	West Midlands	-15%	-5%	-2%	0%	-2%
	East of England	-12%	-3%	-2%	0%	2%
	London	-19%	-10%	-7%	0%	6%
	South East	-12%	-6%	-3%	0%	3%
	South West	-14%	-4%	-1%	0%	2%
	(England total)	-13%	-5%	-3%	0%	2%
	Scotland	-14%	-12%	-9%	0%	4%
	Northern Ireland	-14%	0%	-1%	0%	7%
	Wales	-8%	-6%	-1%	0%	3%
	UK	-13%	-5%	-3%	0%	3%

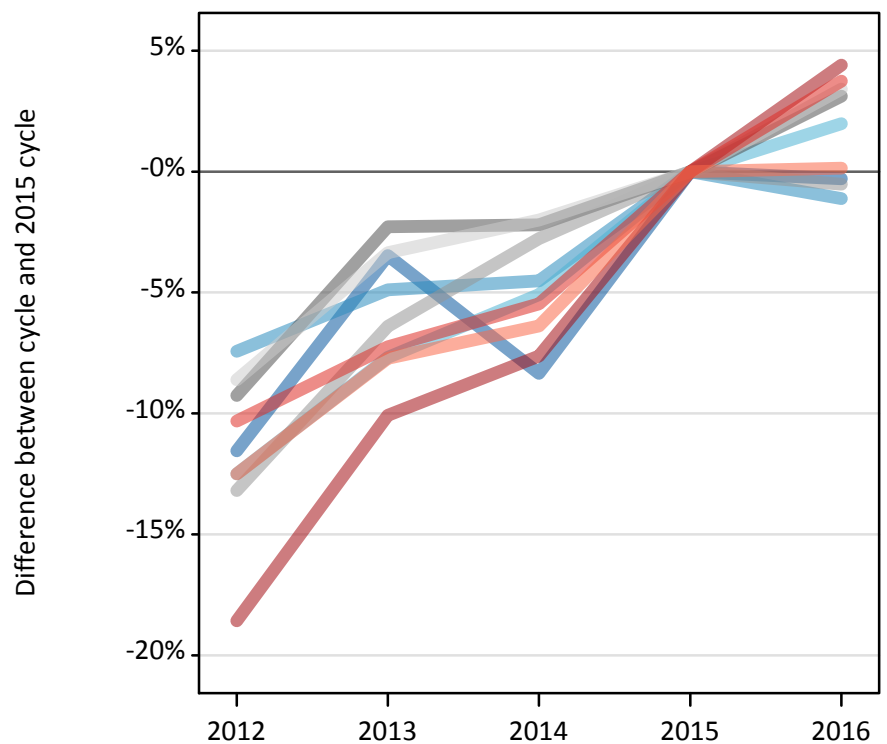
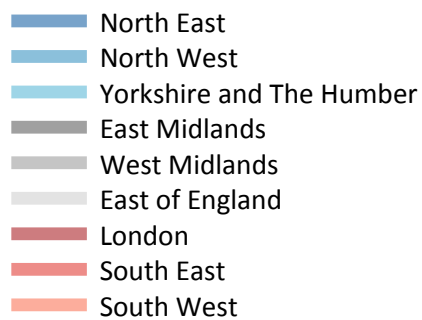
R.4 Placed applicants by region of domicile: A level results day

Placed applicants: absolute change relative to 2015 cycle totals

Applicant Status	Domicile	2012	2013	2014	2015	2016
Placed	North East	-1,740	-250	-650	0	-380
	North West	-3,580	-880	-240	0	180
	Yorkshire and The Humber	-3,590	-1,270	-700	0	290
	East Midlands	-2,540	-350	400	0	920
	West Midlands	-4,790	-1,680	-770	0	-490
	East of England	-3,660	-1,020	-570	0	700
	London	-9,880	-5,200	-3,600	0	2,970
	South East	-6,140	-2,790	-1,510	0	1,700
	South West	-4,140	-1,120	-350	0	670
	(England total)	-40,060	-14,560	-7,980	0	6,540
	Scotland	-4,350	-3,650	-2,660	0	1,360
	Northern Ireland	-1,570	20	-150	0	740
	Wales	-1,310	-980	-240	0	410
	UK	-47,290	-19,180	-11,030	0	9,050

R.5 Placed 18 year old applicants by region of domicile: A level results day

Placed 18 year old applicants: change relative to 2015 cycle totals



R.6 Placed 18 year old applicants by region of domicile: A level results day

Applicant Status	Domicile	2012	2013	2014	2015	2016
Placed	North East	6,340	6,910	6,570	7,160	7,140
	North West	21,250	21,840	21,920	22,960	22,710
	Yorkshire and The Humber	14,130	14,910	15,330	16,150	16,470
	East Midlands	11,980	12,900	12,920	13,210	13,620
	West Midlands	15,480	16,690	17,340	17,830	17,740
	East of England	17,100	18,090	18,340	18,710	19,350
	London	22,330	24,660	25,330	27,420	28,630
	South East	25,920	26,810	27,320	28,900	29,980
	South West	13,160	13,880	14,080	15,040	15,060
	(England total)	147,700	156,690	159,140	167,390	170,700
	Scotland	13,630	13,740	14,070	14,130	14,370
	Northern Ireland	6,030	6,930	6,620	6,740	6,960
	Wales	8,280	8,310	8,640	8,980	9,200
	UK	175,640	185,670	188,460	197,240	201,230

R.7 Placed 18 year old applicants by region of domicile: A level results day

Placed 18 year old applicants: change relative to 2015 cycle totals

Applicant Status	Domicile	2012	2013	2014	2015	2016
Placed	North East	-12%	-3%	-8%	0%	-0%
	North West	-7%	-5%	-5%	0%	-1%
	Yorkshire and The Humber	-13%	-8%	-5%	0%	2%
	East Midlands	-9%	-2%	-2%	0%	3%
	West Midlands	-13%	-6%	-3%	0%	-1%
	East of England	-9%	-3%	-2%	0%	3%
	London	-19%	-10%	-8%	0%	4%
	South East	-10%	-7%	-5%	0%	4%
	South West	-13%	-8%	-6%	0%	0%
	(England total)	-12%	-6%	-5%	0%	2%
	Scotland	-4%	-3%	-0%	0%	2%
	Northern Ireland	-10%	3%	-2%	0%	3%
	Wales	-8%	-7%	-4%	0%	2%
	UK	-11%	-6%	-4%	0%	2%

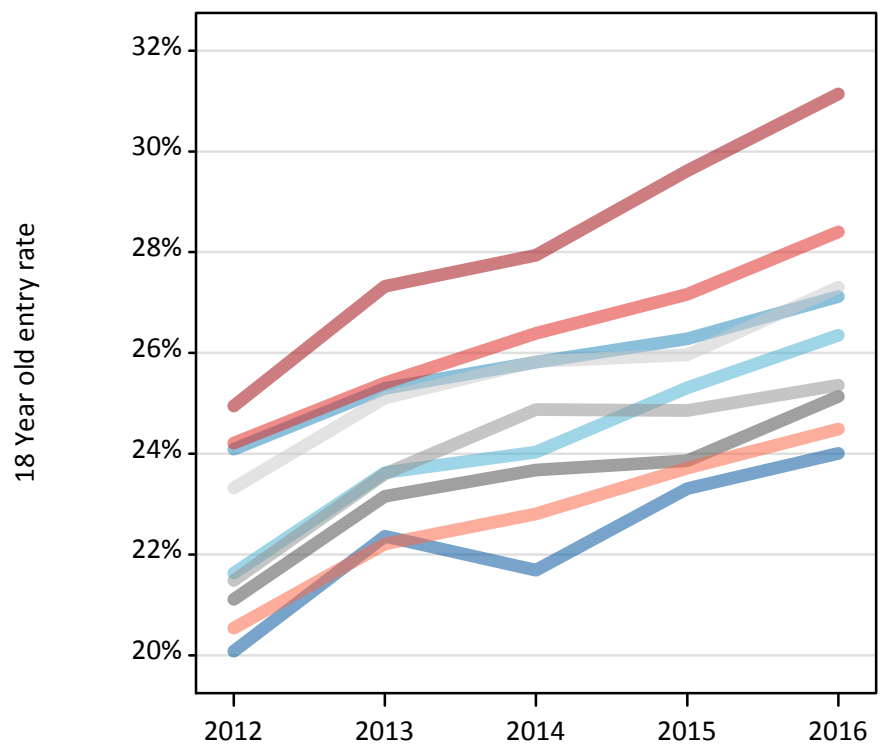
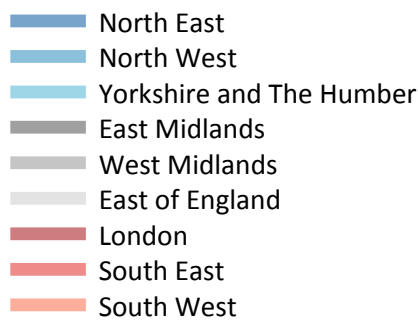
R.8 Placed 18 year old applicants by region of domicile: A level results day

Placed 18 year old applicants: absolute change relative to 2015 cycle totals

Applicant Status	Domicile	2012	2013	2014	2015	2016
Placed	North East	-830	-250	-600	0	-20
	North West	-1,710	-1,120	-1,040	0	-260
	Yorkshire and The Humber	-2,020	-1,240	-820	0	320
	East Midlands	-1,220	-300	-290	0	410
	West Midlands	-2,350	-1,140	-490	0	-90
	East of England	-1,610	-630	-380	0	640
	London	-5,090	-2,760	-2,090	0	1,210
	South East	-2,980	-2,090	-1,580	0	1,080
	South West	-1,880	-1,160	-960	0	20
	(England total)	-19,690	-10,700	-8,250	0	3,310
	Scotland	-510	-400	-70	0	230
	Northern Ireland	-700	200	-110	0	230
	Wales	-700	-670	-340	0	220
	UK	-21,600	-11,570	-8,780	0	3,990

R.9 Placed 18 year old applicants by region of domicile: A level results day

Placed 18 year old applicants: entry rate



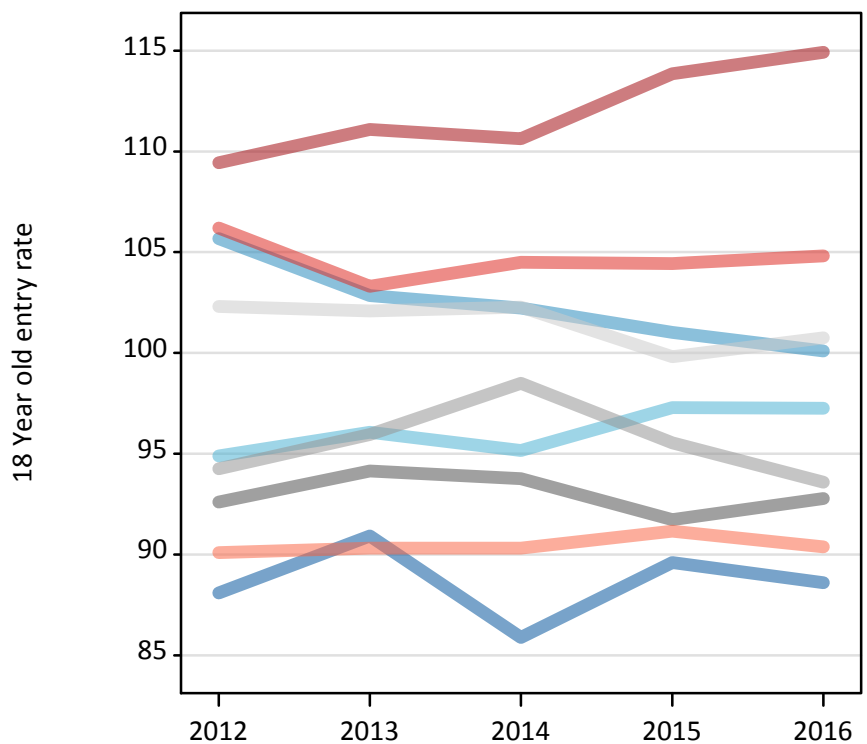
R.10 Placed 18 year old applicants by region of domicile: A level results day

Placed 18 year old applicants: entry rate

Applicant Status	Domicile	2012	2013	2014	2015	2016
Placed	North East	20.1%	22.4%	21.7%	23.3%	24.0%
	North West	24.1%	25.3%	25.8%	26.3%	27.1%
	Yorkshire and The Humber	21.6%	23.6%	24.0%	25.3%	26.4%
	East Midlands	21.1%	23.2%	23.7%	23.9%	25.1%
	West Midlands	21.5%	23.6%	24.9%	24.9%	25.4%
	East of England	23.3%	25.1%	25.8%	26.0%	27.3%
	London	24.9%	27.3%	27.9%	29.6%	31.1%
	South East	24.2%	25.4%	26.4%	27.2%	28.4%
	South West	20.5%	22.2%	22.8%	23.7%	24.5%
	(England total)	22.8%	24.6%	25.3%	26.0%	27.1%
	Scotland	22.0%	22.3%	23.0%	23.5%	24.4%
	Northern Ireland	24.0%	28.3%	27.3%	27.1%	28.5%
	Wales	21.5%	22.0%	23.0%	23.8%	25.3%
	UK	22.7%	24.4%	25.0%	25.7%	26.8%

R.11 Placed 18 year old applicants by region of domicile: A level results day

Placed 18 year old applicants: entry rates (indexed to 100 = England)



R.12 Placed 18 year old applicants by region of domicile: A level results day

Placed 18 year old applicants: entry rate (indexed to 100 = England)

Applicant Status	Domicile	2012	2013	2014	2015	2016
Placed	North East	88	91	86	90	89
	North West	106	103	102	101	100
	Yorkshire and The Humber	95	96	95	97	97
	East Midlands	93	94	94	92	93
	West Midlands	94	96	98	96	94
	East of England	102	102	102	100	101
	London	109	111	111	114	115
	South East	106	103	104	104	105
	South West	90	90	90	91	90
	(England total)	100	100	100	100	100