

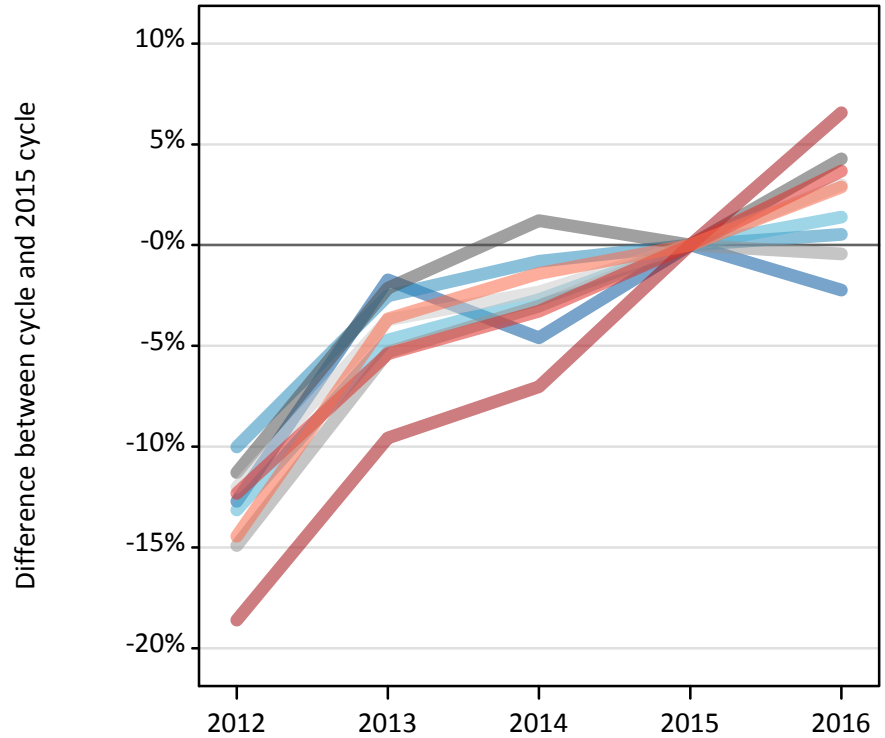
Daily Clearing Analysis: Region

Analysis at 00:05 on Friday 19 August 2016 (1 day after A level results day)

R.1 Placed applicants by region of domicile: 1 day after A level results day

Placed applicants: change relative to 2015 cycle totals

- North East
- North West
- Yorkshire and The Humber
- East Midlands
- West Midlands
- East of England
- London
- South East
- South West



R.2 Placed applicants by region of domicile: 1 day after A level results day

Applicant Status	Domicile	2012	2013	2014	2015	2016
Placed	North East	12,200	13,740	13,340	13,980	13,670
	North West	37,820	40,960	41,680	42,020	42,250
	Yorkshire and The Humber	25,640	28,120	28,720	29,520	29,920
	East Midlands	21,520	23,750	24,560	24,260	25,300
	West Midlands	28,880	32,140	32,910	33,940	33,790
	East of England	29,060	31,810	32,260	33,030	34,020
	London	45,520	50,580	52,000	55,930	59,610
	South East	45,590	49,190	50,290	51,990	53,900
	South West	25,400	28,600	29,270	29,690	30,550
	(England total)	271,620	298,880	305,030	314,360	323,010
	Scotland	26,490	27,150	28,080	30,810	32,180
	Northern Ireland	10,290	11,800	11,770	11,790	12,540
	Wales	15,460	15,970	16,620	17,070	17,510
	UK	323,860	353,800	361,490	374,020	385,230

R.3 Placed applicants by region of domicile: 1 day after A level results day

Placed applicants: change relative to 2015 cycle totals

Applicant Status	Domicile	2012	2013	2014	2015	2016
Placed	North East	-13%	-2%	-5%	0%	-2%
	North West	-10%	-3%	-1%	0%	1%
	Yorkshire and The Humber	-13%	-5%	-3%	0%	1%
	East Midlands	-11%	-2%	1%	0%	4%
	West Midlands	-15%	-5%	-3%	0%	-0%
	East of England	-12%	-4%	-2%	0%	3%
	London	-19%	-10%	-7%	0%	7%
	South East	-12%	-5%	-3%	0%	4%
	South West	-14%	-4%	-1%	0%	3%
	(England total)	-14%	-5%	-3%	0%	3%
	Scotland	-14%	-12%	-9%	0%	4%
	Northern Ireland	-13%	0%	-0%	0%	6%
	Wales	-9%	-6%	-3%	0%	3%
	UK	-13%	-5%	-3%	0%	3%

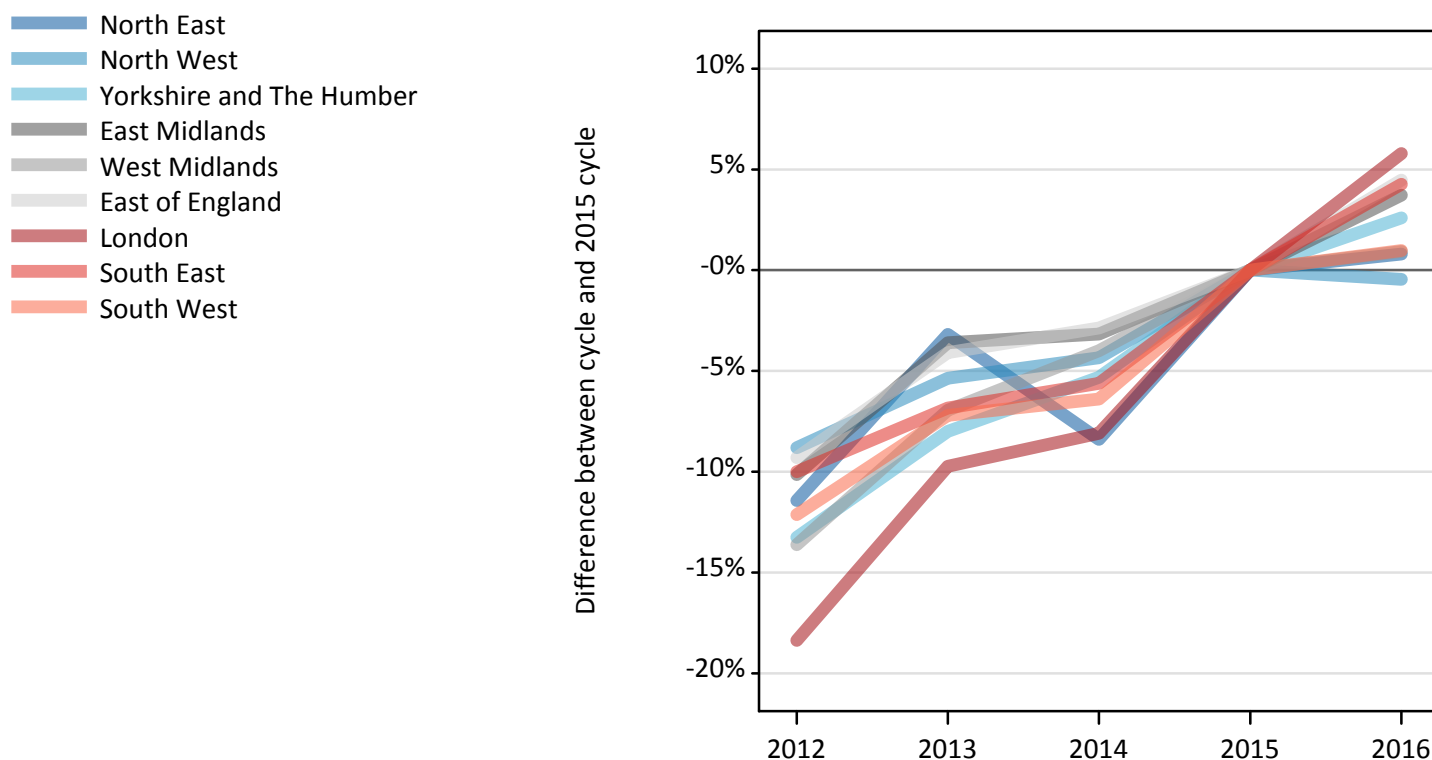
R.4 Placed applicants by region of domicile: 1 day after A level results day

Placed applicants: absolute change relative to 2015 cycle totals

Applicant Status	Domicile	2012	2013	2014	2015	2016
Placed	North East	-1,780	-240	-640	0	-310
	North West	-4,210	-1,060	-340	0	230
	Yorkshire and The Humber	-3,880	-1,390	-800	0	410
	East Midlands	-2,740	-520	300	0	1,040
	West Midlands	-5,060	-1,800	-1,030	0	-150
	East of England	-3,970	-1,220	-770	0	990
	London	-10,410	-5,350	-3,930	0	3,670
	South East	-6,400	-2,810	-1,700	0	1,910
	South West	-4,290	-1,090	-420	0	860
	(England total)	-42,740	-15,480	-9,330	0	8,650
	Scotland	-4,320	-3,660	-2,730	0	1,370
	Northern Ireland	-1,500	20	-20	0	750
	Wales	-1,610	-1,100	-450	0	440
	UK	-50,170	-20,230	-12,530	0	11,210

R.5 Placed 18 year old applicants by region of domicile: 1 day after A level results day

Placed 18 year old applicants: change relative to 2015 cycle totals



R.6 Placed 18 year old applicants by region of domicile: 1 day after A level results day

Applicant Status	Domicile	2012	2013	2014	2015	2016
Placed	North East	6,670	7,290	6,900	7,530	7,590
	North West	22,040	22,870	23,120	24,170	24,060
	Yorkshire and The Humber	14,700	15,580	16,040	16,940	17,380
	East Midlands	12,530	13,450	13,510	13,950	14,470
	West Midlands	16,250	17,500	18,060	18,810	18,980
	East of England	17,930	18,960	19,210	19,770	20,660
	London	23,800	26,320	26,800	29,160	30,850
	South East	27,420	28,380	28,760	30,470	31,770
	South West	13,870	14,650	14,780	15,790	15,940
	(England total)	155,210	165,010	167,160	176,580	181,690
	Scotland	13,720	13,810	14,120	14,170	14,450
	Northern Ireland	6,520	7,310	7,080	7,140	7,350
	Wales	8,610	8,740	9,030	9,480	9,730
	UK	184,060	194,870	197,380	207,370	213,220

R.7 Placed 18 year old applicants by region of domicile: 1 day after A level results day

Placed 18 year old applicants: change relative to 2015 cycle totals

Applicant Status	Domicile	2012	2013	2014	2015	2016
Placed	North East	-11%	-3%	-8%	0%	1%
	North West	-9%	-5%	-4%	0%	-0%
	Yorkshire and The Humber	-13%	-8%	-5%	0%	3%
	East Midlands	-10%	-4%	-3%	0%	4%
	West Midlands	-14%	-7%	-4%	0%	1%
	East of England	-9%	-4%	-3%	0%	4%
	London	-18%	-10%	-8%	0%	6%
	South East	-10%	-7%	-6%	0%	4%
	South West	-12%	-7%	-6%	0%	1%
	(England total)	-12%	-7%	-5%	0%	3%
	Scotland	-3%	-3%	-0%	0%	2%
	Northern Ireland	-9%	2%	-1%	0%	3%
	Wales	-9%	-8%	-5%	0%	3%
	UK	-11%	-6%	-5%	0%	3%

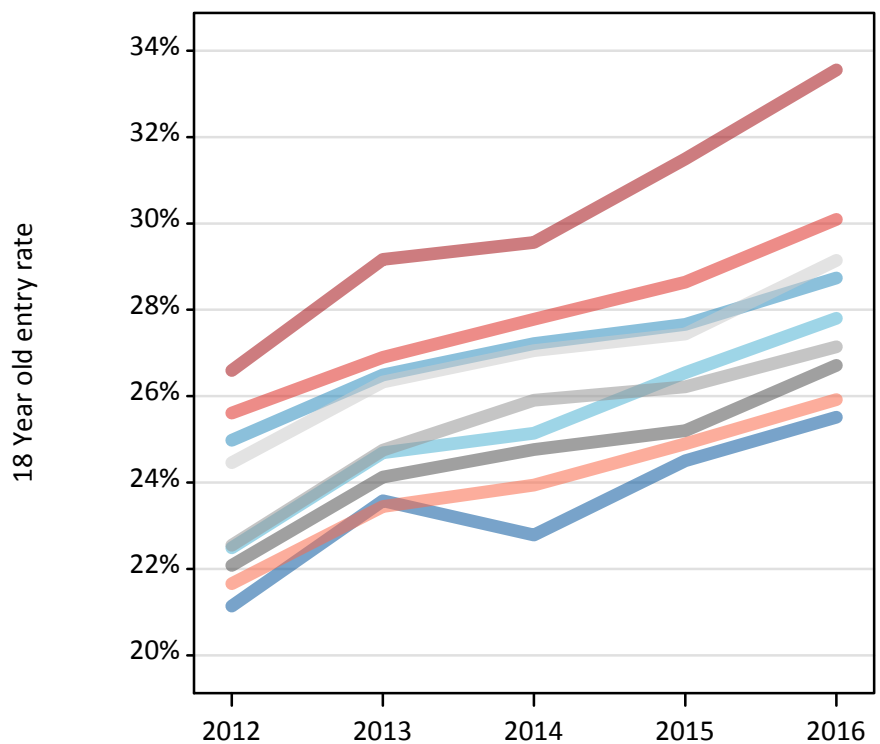
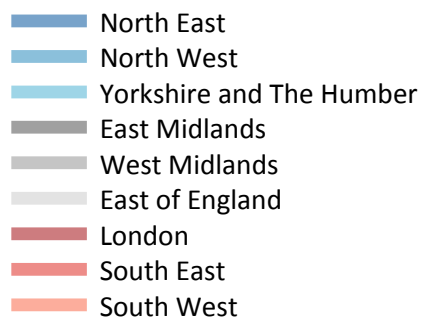
R.8 Placed 18 year old applicants by region of domicile: 1 day after A level results day

Placed 18 year old applicants: absolute change relative to 2015 cycle totals

Applicant Status	Domicile	2012	2013	2014	2015	2016
Placed	North East	-860	-240	-630	0	60
	North West	-2,130	-1,300	-1,050	0	-110
	Yorkshire and The Humber	-2,240	-1,360	-900	0	440
	East Midlands	-1,420	-500	-440	0	520
	West Midlands	-2,560	-1,310	-750	0	180
	East of England	-1,840	-810	-570	0	880
	London	-5,360	-2,840	-2,360	0	1,690
	South East	-3,050	-2,090	-1,710	0	1,300
	South West	-1,920	-1,140	-1,010	0	150
	(England total)	-21,370	-11,570	-9,420	0	5,110
	Scotland	-450	-360	-60	0	280
	Northern Ireland	-630	170	-70	0	200
	Wales	-870	-740	-450	0	250
	UK	-23,310	-12,500	-9,990	0	5,850

R.9 Placed 18 year old applicants by region of domicile: 1 day after A level results day

Placed 18 year old applicants: entry rate



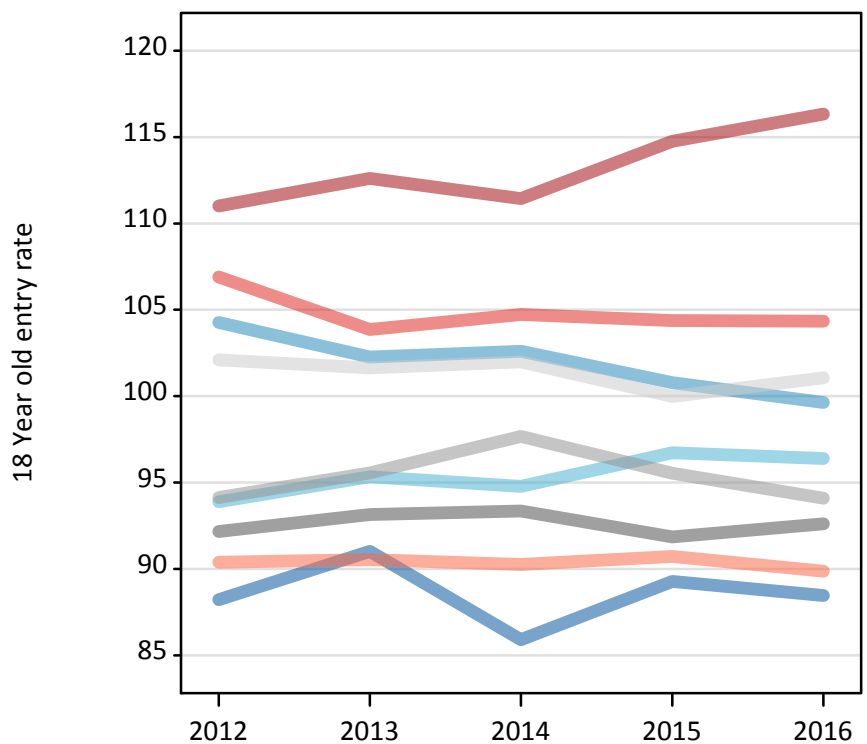
R.10 Placed 18 year old applicants by region of domicile: 1 day after A level results day

Placed 18 year old applicants: entry rate

Applicant Status	Domicile	2012	2013	2014	2015	2016
Placed	North East	21.1%	23.6%	22.8%	24.5%	25.5%
	North West	25.0%	26.5%	27.2%	27.7%	28.7%
	Yorkshire and The Humber	22.5%	24.7%	25.1%	26.5%	27.8%
	East Midlands	22.1%	24.1%	24.8%	25.2%	26.7%
	West Midlands	22.6%	24.8%	25.9%	26.2%	27.1%
	East of England	24.5%	26.3%	27.1%	27.4%	29.1%
	London	26.6%	29.2%	29.6%	31.5%	33.6%
	South East	25.6%	26.9%	27.8%	28.6%	30.1%
	South West	21.7%	23.4%	23.9%	24.9%	25.9%
	(England total)	24.0%	25.9%	26.5%	27.4%	28.8%
	Scotland	22.1%	22.4%	23.0%	23.5%	24.6%
	Northern Ireland	25.9%	29.8%	29.2%	28.8%	30.0%
	Wales	22.3%	23.1%	24.1%	25.2%	26.8%
	UK	23.8%	25.6%	26.2%	27.1%	28.4%

R.11 Placed 18 year old applicants by region of domicile: 1 day after A level results day

Placed 18 year old applicants: entry rates (indexed to 100 = England)



R.12 Placed 18 year old applicants by region of domicile: 1 day after A level results day

Placed 18 year old applicants: entry rate (indexed to 100 = England)

Applicant Status	Domicile	2012	2013	2014	2015	2016
Placed	North East	88	91	86	89	88
	North West	104	102	103	101	100
	Yorkshire and The Humber	94	95	95	97	96
	East Midlands	92	93	93	92	93
	West Midlands	94	96	98	96	94
	East of England	102	102	102	100	101
	London	111	113	111	115	116
	South East	107	104	105	104	104
	South West	90	91	90	91	90
	(England total)	100	100	100	100	100